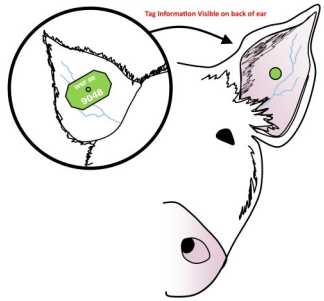
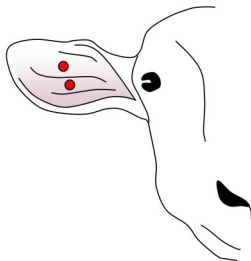


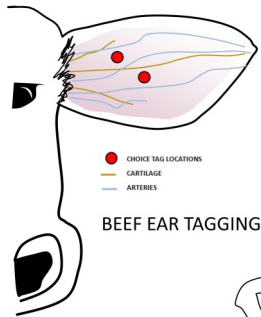
Ear Tag Placement



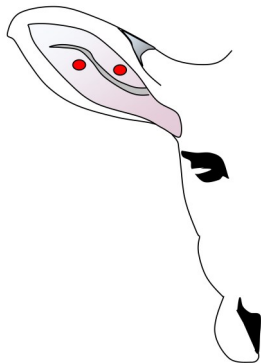
SWINE EAR TAGGING



GOAT EAR TAGGING



BEEF EAR TAGGING



SHEEP EAR TAGGING



For more information contact your local Extension Office or your 4-H leader.

Created By:

Tansey Sussex

University of Wyoming Extension

Laramie County 4-H

1400 E. College Dr.

Pathfinder Building, 4th Floor

Cheyenne, WY 82007

(307) 633-4383

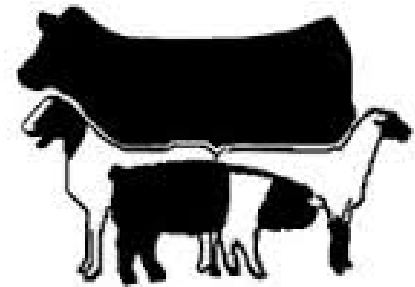
Sussex@uwyo.edu

Trade or brand names used in this publication are used only for the purpose of educational information. The information given herein is supplied with the understanding that no discrimination is intended, and no endorsement information of products by the University of Wyoming Extension is implied. Nor does it imply approval of products to the exclusion of others, which may also be suitable.

The University of Wyoming is an equal

Tagging Your 4-H Animal

4-H Youth Livestock





Supplies

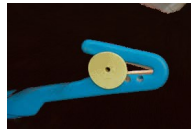
Tagging Gun

There are various types of tagging guns. The Y-Tex tagging gun works well and you can purchase it at most livestock supply stores.



Tag Remover

If your animal already has a tag in its ear you might wish to replace it with your own tags. Be sure not to remove important tags like Premise ID tags, Scrapie tags, or Brucellosis tags. You can purchase a tag remover at most livestock supply stores.



Ear Tags

Ear tags will often have a male end and a female end. Different species have different tag sizes, shape, and colors.



Scrapie Tags

Premise ID Tags

Premise ID tags are a permanent tag used to identify and trace an animal. They can be found in any species and in either ear. It's important not to remove these tags.



Premise ID Tags

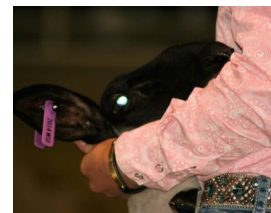
Tagging Your Animal

Try to restrain your animal as best as possible. It can be challenging to tag a moving animal and they'll most likely jump when you tag them. To load the tagging gun, press the male side of the tag completely onto the needle of the tagging gun. It should be firmly attached. The flat half of the tag should be placed on the clip side of the gun with the flat side up. Hold the ear in one hand and feel for any large veins or cartilage. You will want to place the tag between the veins or large cartilage and toward the middle of the ear. If the tag is too close to an edge of the ear it may get caught and be pulled out easier. It may take you two hands to clamp the tag. Once you have your position quickly and firmly squeeze the handles together, this will often take two hands. Sometimes the ear will bleed a little. That's not abnormal but you should watch for excess swelling or infection and contact your vet and the Extension Office if you have concerns. Your animal may shake their head or hold their ear funny for a few minutes but should adjust to the tag quickly.



Sheep & Goat Tags

Sheep & goat tags should be placed with the ID number on the outside of the ear. Tags can be placed in either ear but you might want to choose the ear opposite the Scrapie tag. Do not remove Scrapie tags.



Swine Tags

Swine tags should be placed with the number on the outside of the ear and the button on the inside. Tags can go in either ear. Swine can be hard to contain so it might be easier to use a panel to get them into a corner for containment. Don't try to tie or halter your pig.



Beef Tags

Beef tags should be placed with the number on the inside of the ear and the button on the back of the ear. If you are tagging a heifer you will want to place the tag in the left ear because a Brucellosis tag will be placed in the right ear. Don't remove a Brucellosis tag.



Brucellosis Tag

