

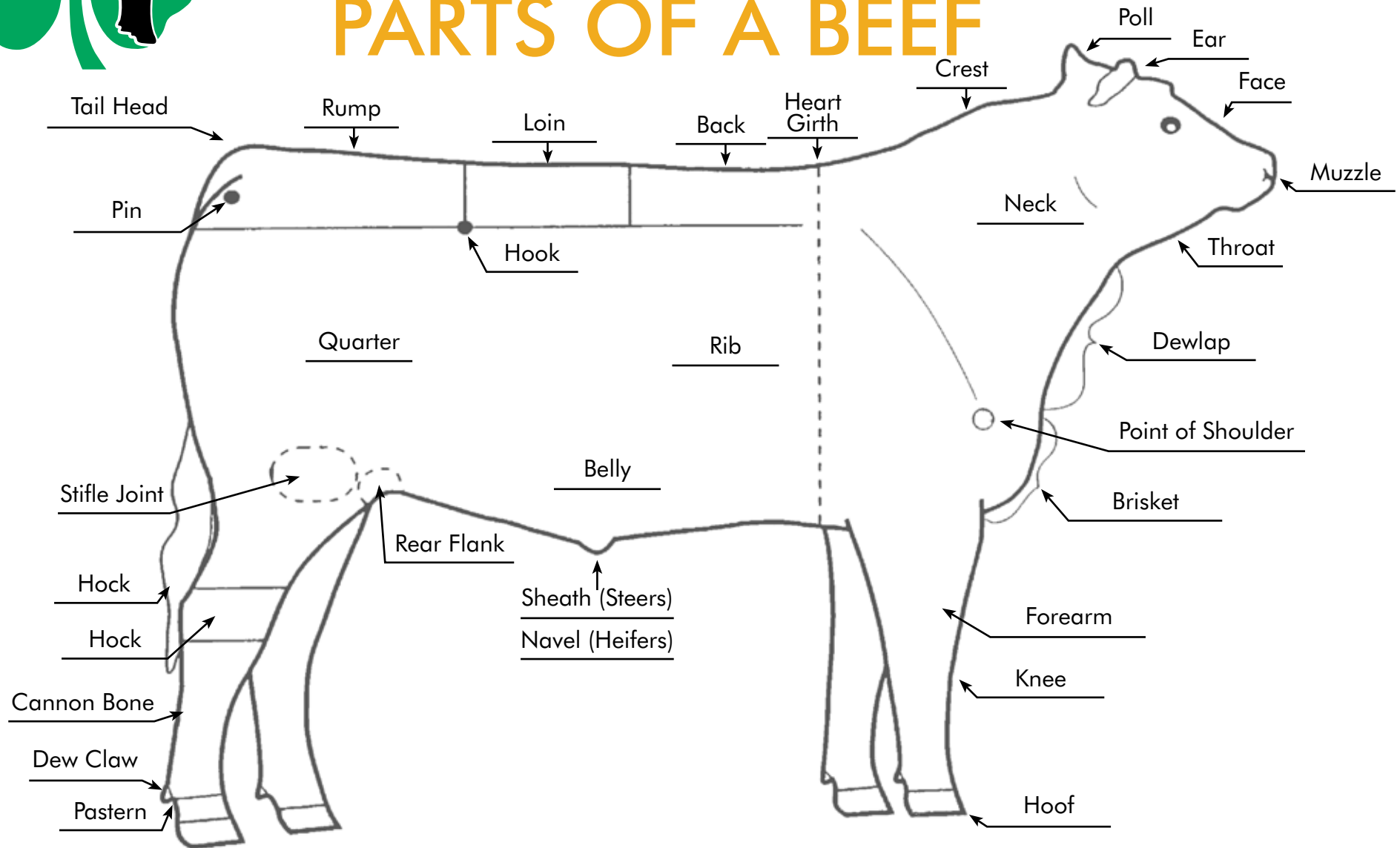


MARKET BEEF

Know Your Steer

LESSON 3
ACTIVITY 2

PARTS OF A BEEF

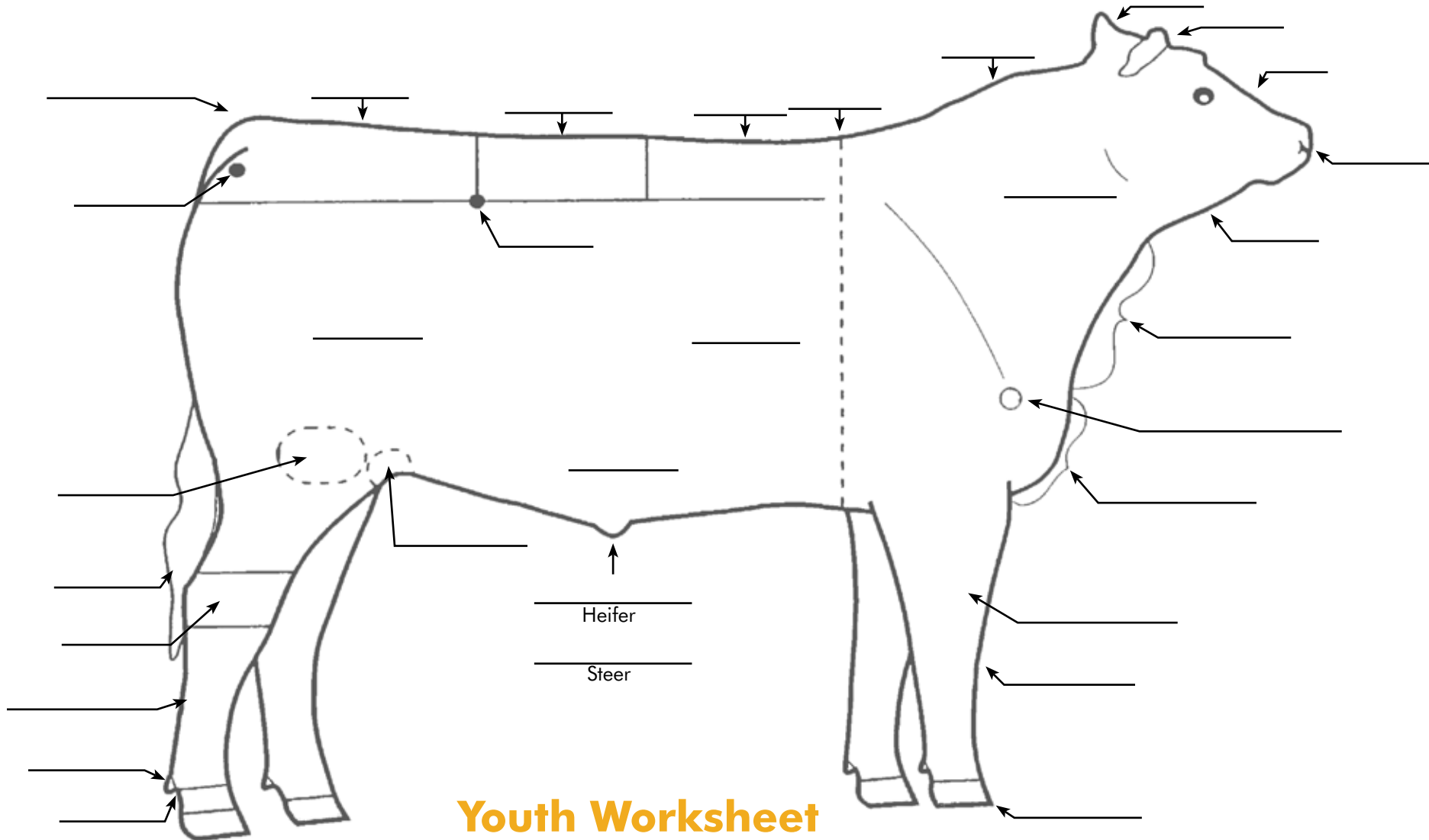


1. Print out the picture of the beef animal on page 2 and have the members work in pairs or small groups to see who can correctly complete the activity first. Alternatively, you can use the big poster in the swine education kit and have the kids go up and stick the correct labels on the parts. Or you can do it both ways as the handout is a great way for them to having something to take home and continue to study!
2. Use this time to talk about some of the parts in relation to structural correctness, style and balance.

PARTS OF A BEEF

Label the parts of a beef in the spaces provided.
Use the list at the right to fill in the blanks.

Brisket	Quarter	Tail Head	Knee
Ear	Back	Pastern	Forearm
Poll	Switch	Rear Flank	Hook
Crest	Hock	Belly	Point Of Shoulder
Heart Girth	Rump	Sheath (Steer)	Muzzle
Loin	Cannon Bone	Rib	Dewlap
Pin	Face	Stifle Joint	Neck
Naval (Heifer)	Dew Claw	Hoof	Throat



Youth Worksheet