

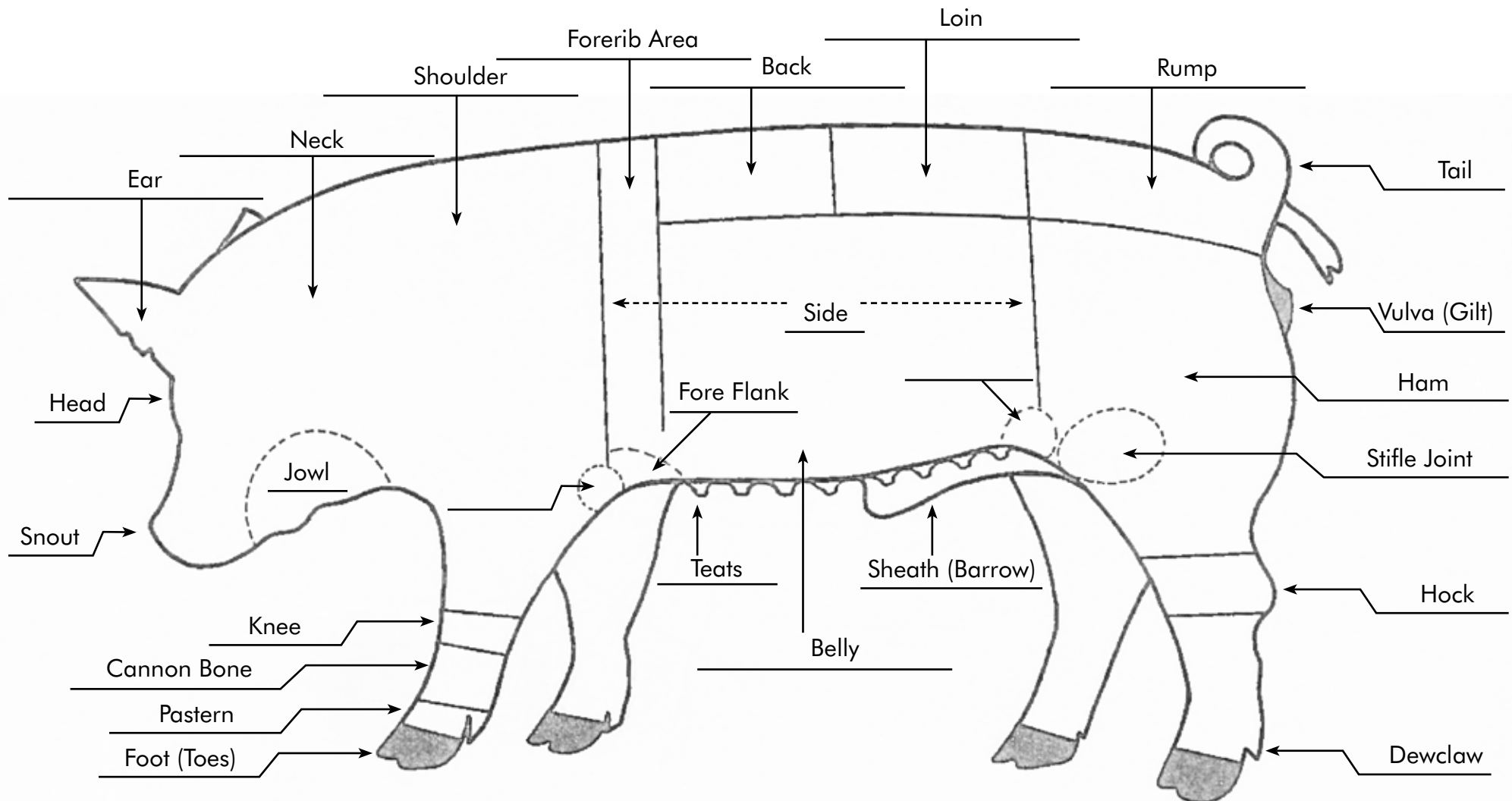
MARKET SWINE

Know Your Pig

LESSON 3
ACTIVITY 2

PARTS OF A HOG

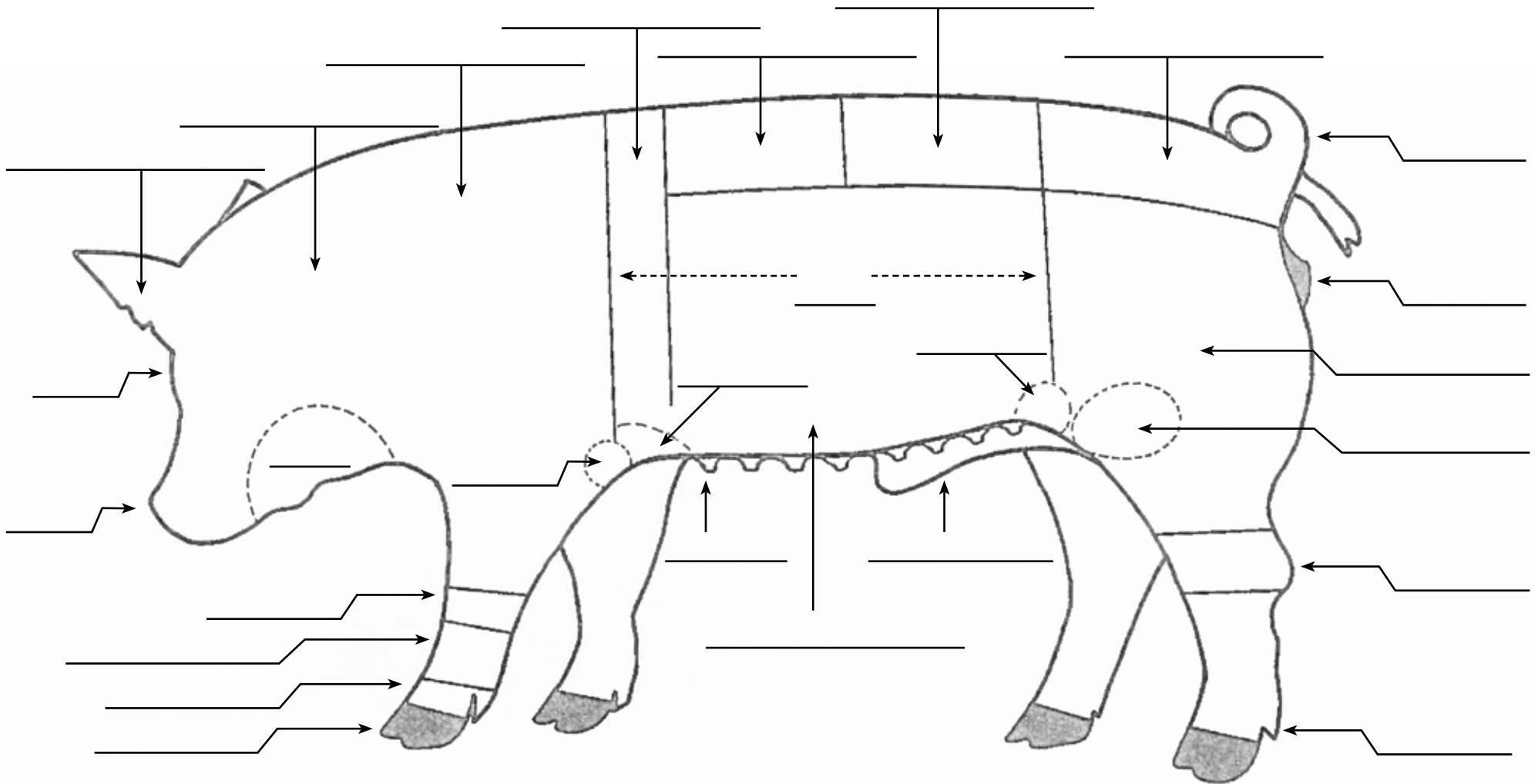
1. Print out the picture of the swine animal on page 2 and have the members work in pairs or small groups to see who can correctly complete the activity first. Alternatively, you can use the big poster in the swine education kit and have the kids go up and stick the correct labels on the parts. Or you can do it both ways as the handout is a great way for them to having something to take home and continue to study!
2. Use this time to talk about some of the parts in relation to structural correctness, style and balance.



PARTS OF A HOG

Label the parts of a swine in the spaces provided.
Use the list at the right to fill in the blanks.

Ear	Tail	Belly	Cannon bone
Neck	Vulva (Gilt)	Teats	Pastern
Shoulder	Ham	Rear flank	Foot (Toes)
Forerib Area	Stifle Joint	Side	Jowl
Back	Hock	Fore flank	Snout
Loin	Dewclaw	Elbow	Head
Rump	Sheath (Barrow)	Knee	



Parts of a Hog Youth Worksheet